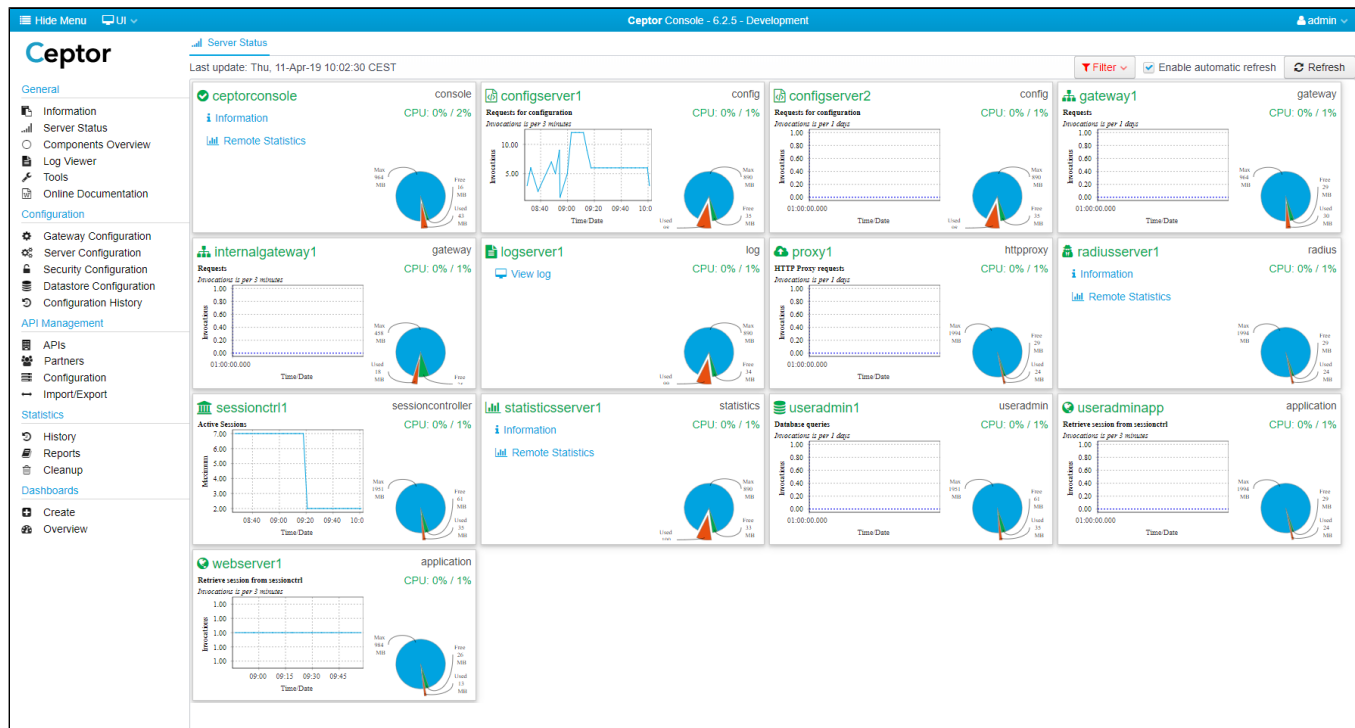


Server Overview

In the server overview, you can get a quick overview of the status of all running server/components.



You can also filter out either offline servers or any types of servers you do not want to see in the overview. Once filtering is enabled, the Filter button will change appearance to indicate that filtering is active.

Any servers that match the filtered items will not be shown on the list. Filters are persisted between logins for each user.

Ceptor Console - 6.2.5 - Development

admin

Ceptor

Server Status

Last update: Thu, 11-Apr-19 10:03:39 CEST

Filter Enable automatic refresh Refresh

Offline servers

Types

- application
- config
- dispatcher
- gateway
- log
- httpproxy
- radius
- scl
- scltunnel
- sessioncontroller
- statistics
- useradmin
- adminclient

General

- Information
- Server Status
- Components Overview
- Log Viewer
- Tools
- Online Documentation

Configuration

- Gateway Configuration
- Server Configuration
- Security Configuration
- Datastore Configuration
- Configuration History

API Management

- APIs
- Partners
- Configuration
- Import/Export

Statistics

- History
- Reports
- Cleanup

Dashboards

- Create
- Overview

Server Status Grid:

- ceptorconsole** (console): CPU: 0% / 3%. Requests for configuration. Involvement: 10.00.
- configserver1** (config): CPU: 0% / 3%. Requests for configuration. Involvement: 1.00.
- configserver2** (config): CPU: 0% / 3%. Requests for configuration. Involvement: 0.00.
- gateway** (gateway): CPU: 0% / 3%. Requests for configuration. Involvement: 0.00.
- internalgateway1** (gateway): CPU: 0% / 3%. Requests. Involvement: 0.00.
- logserver1** (log): CPU: 0% / 3%. HTTP Proxy requests. Involvement: 0.00.
- proxy1** (httpproxy): CPU: 0% / 3%. HTTP Proxy requests. Involvement: 0.00.
- radiusserver1** (radius): CPU: 0% / 3%. Database queries. Involvement: 0.00.
- sessionctrl1** (sessioncontroller): CPU: 0% / 3%. Active Sessions. Involvement: 0.00.
- statisticsserver1** (statistics): CPU: 0% / 3%. Database queries. Involvement: 0.00.
- useradmin1** (useradmin): CPU: 0% / 3%. Database queries. Involvement: 0.00.
- useradminapp** (application): CPU: 0% / 3%. Retrieve session from sessionctrl. Involvement: 0.00.
- webserver1** (application): CPU: 0% / 3%. Retrieve session from sessionctrl. Involvement: 0.00.

Filter Enable automatic refresh Refresh

Offline servers

Types

- application
- config
- dispatcher
- gateway
- log
- httpproxy
- radius
- scl
- scltunnel
- sessioncontroller
- statistics
- useradmin
- adminclient

When you click on a server, you get a new screen showing more information for the particular server instance, see [Server Status](#) for details.